



## **Barrier Free Environment & Disabled Friendly Campus**

### **Criteria 7.1.7**



Registrar  
Quantum University

## INDEX

CONTENT	PAGE NO
BUILT ENVIRONMENT WITH RAMPS/LIFTS FOR EASY ACCESS TO CLASSROOMS.	3
DIVYANGJAN FRIENDLY WASHROOMS	10
TACTILE PATH & DISPLAY BOARD	11
PARKING FOR DISABLED	16
ASSISTIVE TECHNOLOGY	17
EXAMINATION MANUAL TAILORED TO EMPOWER USERS WITH DISABILITIES	22



Registrar  
Quantum University

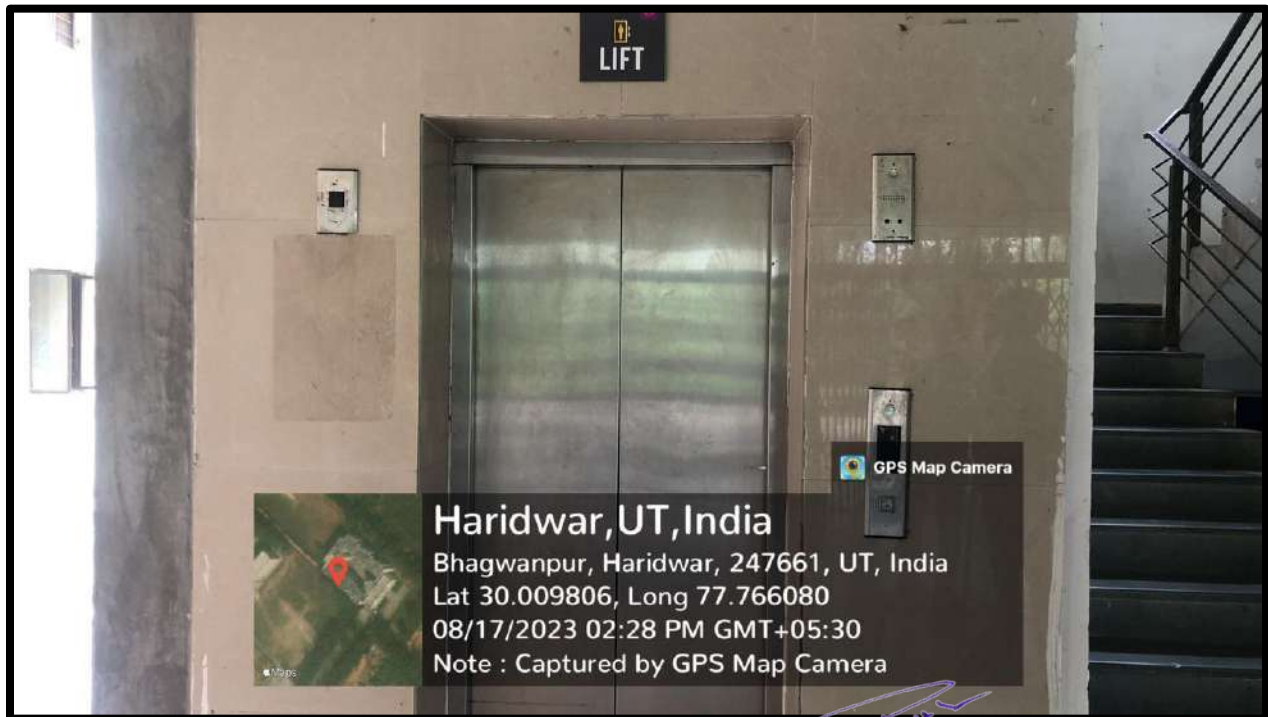
Quantum University in Roorkee has taken commendable strides in fostering an inclusive educational environment by adopting the Persons with Disabilities Act 2016 (PwD). The institution's commitment to accessibility is evident in its construction practices, with most buildings adhering to government norms to ensure the inclusion of features catering to Persons with Disabilities. These include accessible parking, ramps with railings, disabled-friendly toilets with grab bars and sliding doors, and lifts equipped with grab bars. Notably, the university has implemented a policy mandating ramps in every building and lifts in structures with more than three stories. This comprehensive approach extends to lift maintenance, as evidenced by the provision of attendants in each lift and the incorporation of lifts into an Annual Maintenance Contract (AMC). This commitment reflects an understanding of the importance of maintaining reliable and safe vertical mobility for individuals with disabilities. Overall, Quantum University's efforts showcase a dedication to creating an inclusive educational landscape, where physical infrastructure aligns with the principles of accessibility, facilitating equal participation for all stakeholders in the learning community.

  
Registrar  
Quantum University

## **BUILT ENVIRONMENT WITH RAMPS/LIFTS FOR EASY ACCESS TO CLASSROOMS.**

Quantum University prioritizes accessibility by integrating ramps and lifts into the built environment, ensuring ease of access to classrooms for all students, faculty, and visitors. Ramps, thoughtfully designed with gentle slopes and sturdy railings, facilitate smooth navigation for individuals with mobility aids. Strategically placed lifts offer alternative access to multi-story buildings, ensuring inclusivity for those with mobility challenges. These features not only comply with accessibility standards but also embody our commitment to fostering an inclusive and supportive learning environment. By eliminating physical barriers, we empower every member of our community to fully participate in academic pursuits, fostering diversity and enriching the educational experience for all.

### **Images of Lift Provided in the boy's hostel**





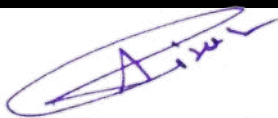
  
Registrar  
Quantum University

Image of Lift Provided in the admin block



Registrar  
Quantum University



**Lift Provided in the Girl's hostel**

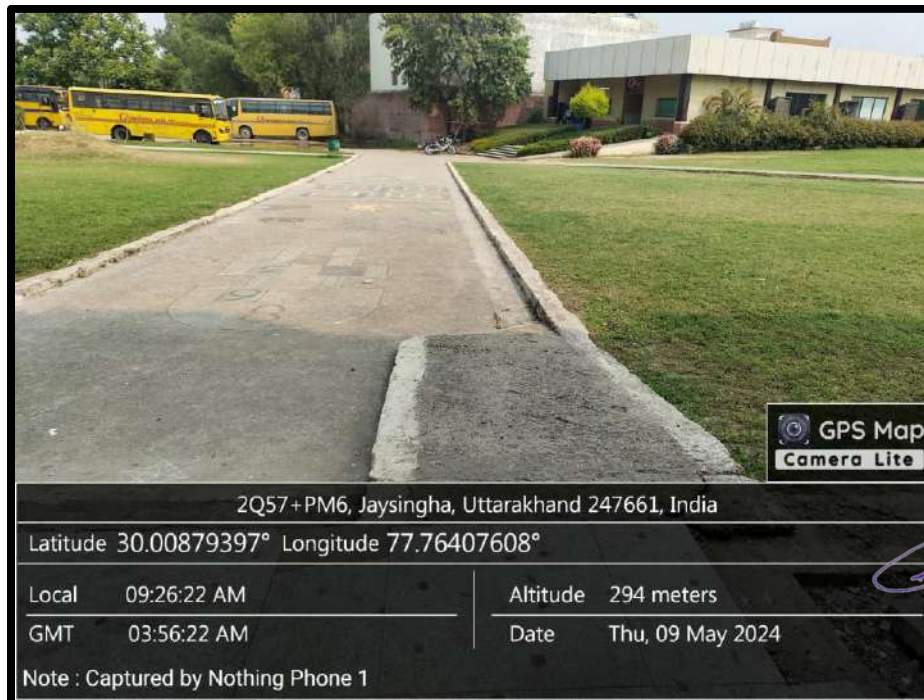


  
Registrar  
Quantum University

Image of ramp provided in the Cafeteria



Image of ramp provided in the A Block



*[Signature]*  
Registrar  
Quantum University



Image of ramp provided in the B Block

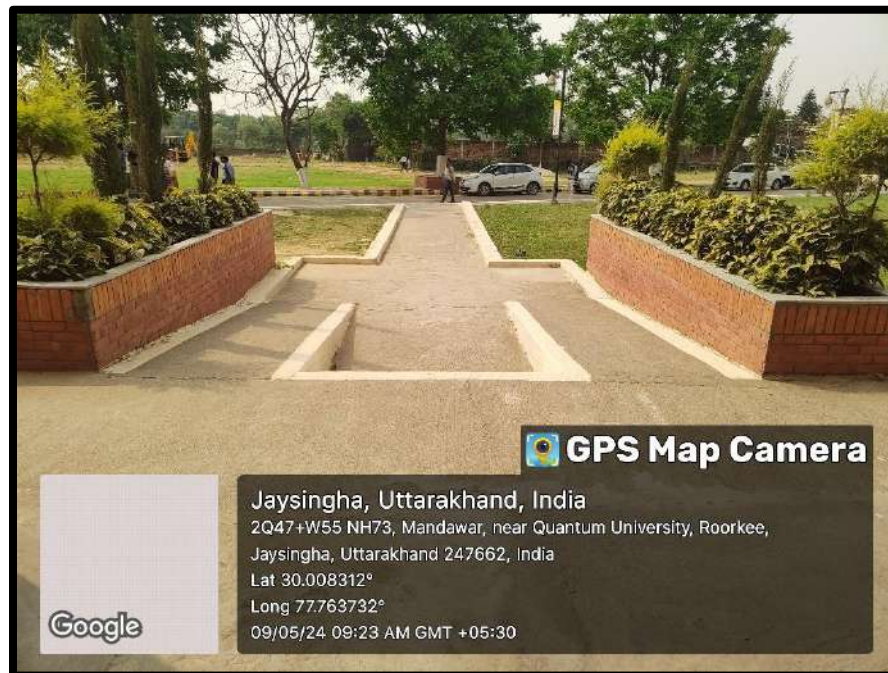


Image of ramp provided in the Boys Hostel



Image of ramp provided in the Girls Hostel



Image of ramp provided in the F Block



## DIVYANGJAN FRIENDLY WASHROOMS

Quantum University proudly implements Divyangjan-friendly washrooms, prioritizing inclusivity across our campus. These facilities feature spacious layouts accommodating mobility aids and strategically placed grab bars for support. Lowered fixtures ensure accessibility, while clear signage aids those with visual impairments. Adhering to universal design principles, our washrooms offer ease of use for all, including gender-neutral facilities for inclusivity. By fostering an environment where every individual feels valued and empowered, we promote dignity and independence for all members of our community. Our commitment to Divyangjan-friendly initiatives reflects our dedication to social equity and sets a precedent for inclusivity in educational institutions nationwide.

### *Presenting Image of Divyangjan friendly washrooms*



Registrar  
Quantum University

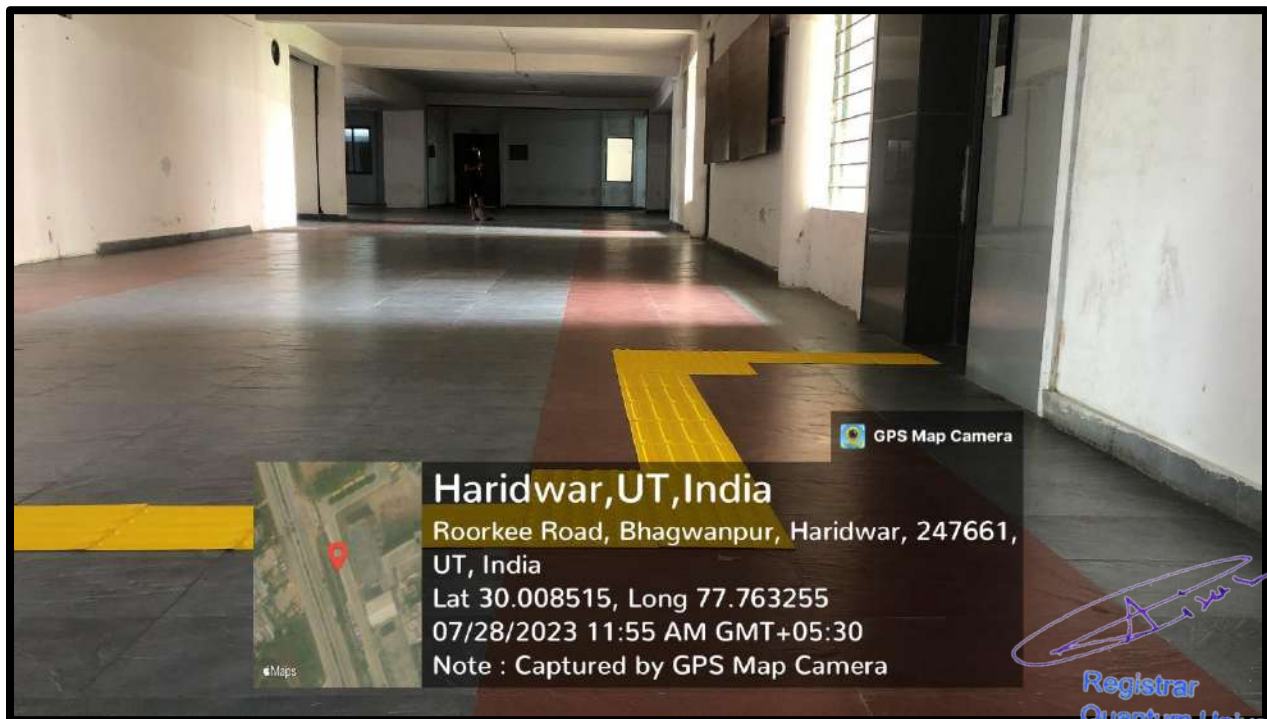


## **TACTILE PATH, DISPLAY BOARDS**

In addition to its physical infrastructure initiatives, Quantum University in Roorkee demonstrates a commitment to inclusivity through a comprehensive approach to signage. The campus is equipped with tactile paths, ensuring that individuals with visual impairments can navigate the university independently. Tactile paths are designed with distinctive textures to provide sensory cues, aiding those with visual disabilities in wayfinding. The integration of well-designed lighting enhances visibility, ensuring a safe and accessible environment, particularly during low-light conditions. Moreover, strategically placed display boards and signposts throughout the campus contribute to effective communication of information. These visual aids play a crucial role in guiding students, faculty, and visitors, fostering a sense of inclusivity by providing clear directions and information. The use of accessible signage aligns with universal design principles, benefitting the entire university community while specifically addressing the needs of individuals with disabilities. Quantum University's commitment to a holistic and inclusive environment extends beyond physical structures, encompassing thoughtful and accessible signage to enhance the overall experience for everyone on campus.

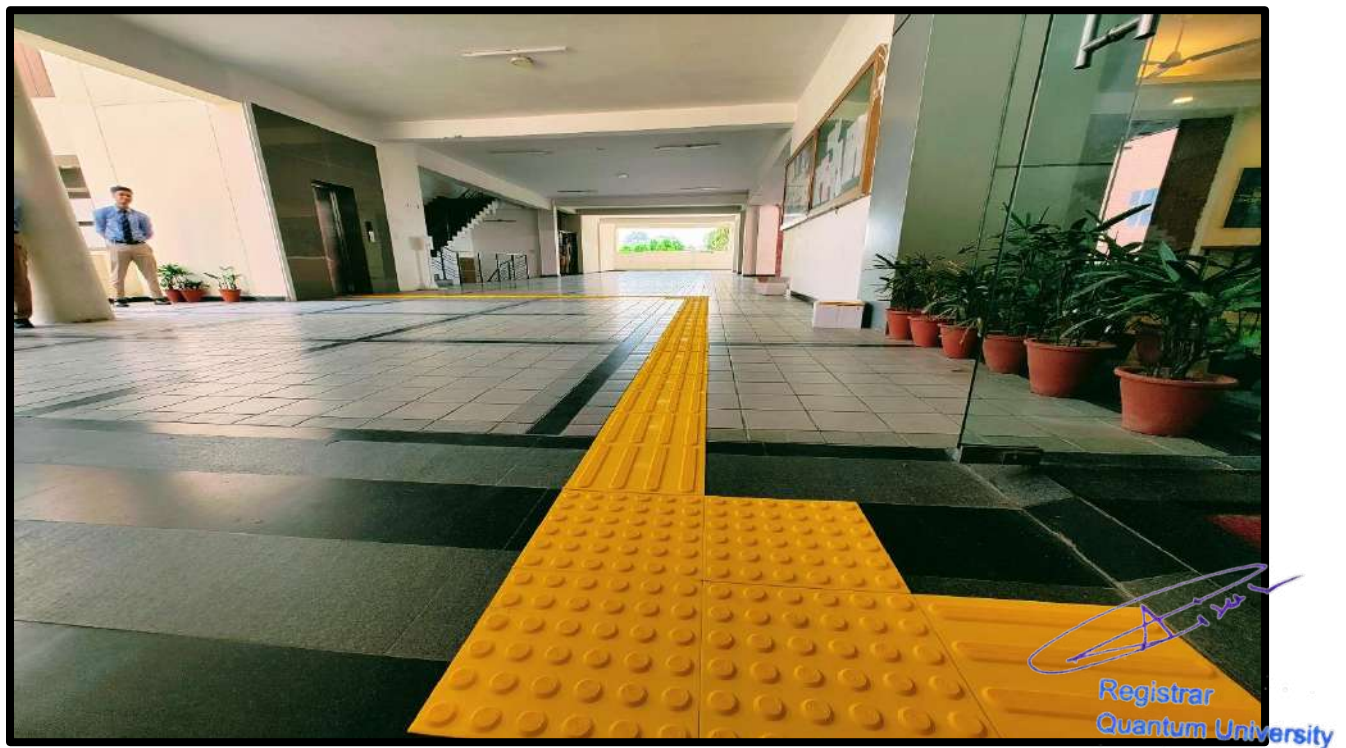
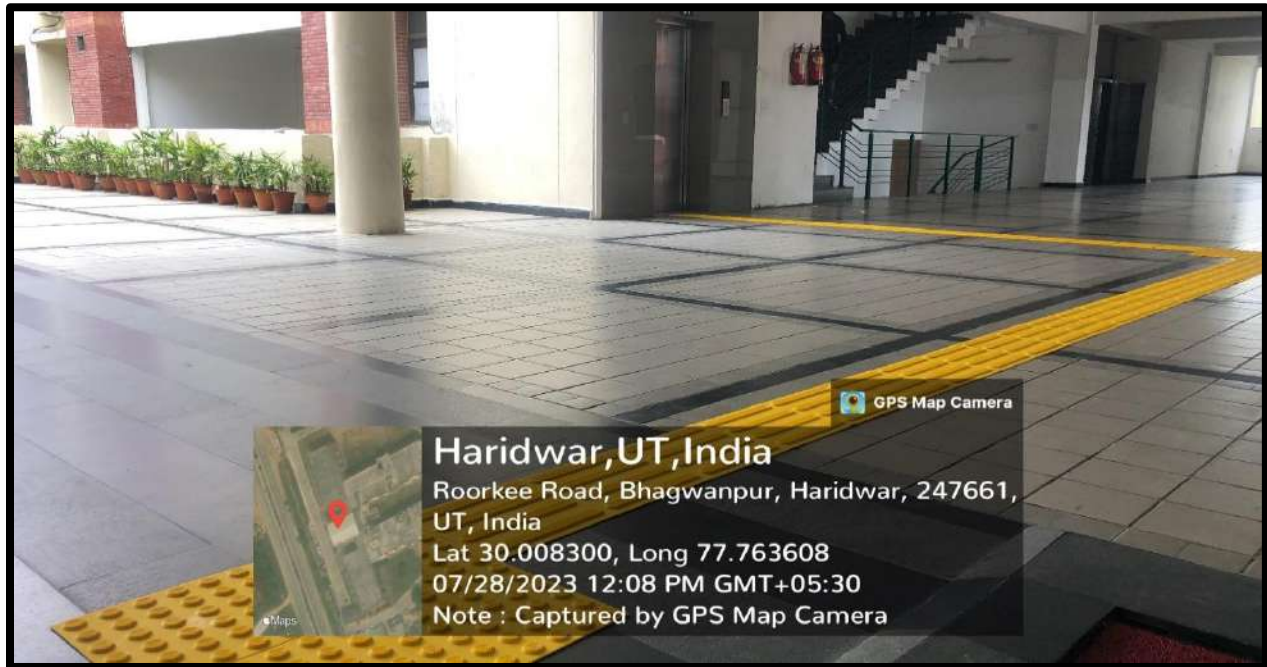
  
Registrar  
Quantum University

### Presenting Images of Tactiles Path






### Presenting Images of Tactiles Path



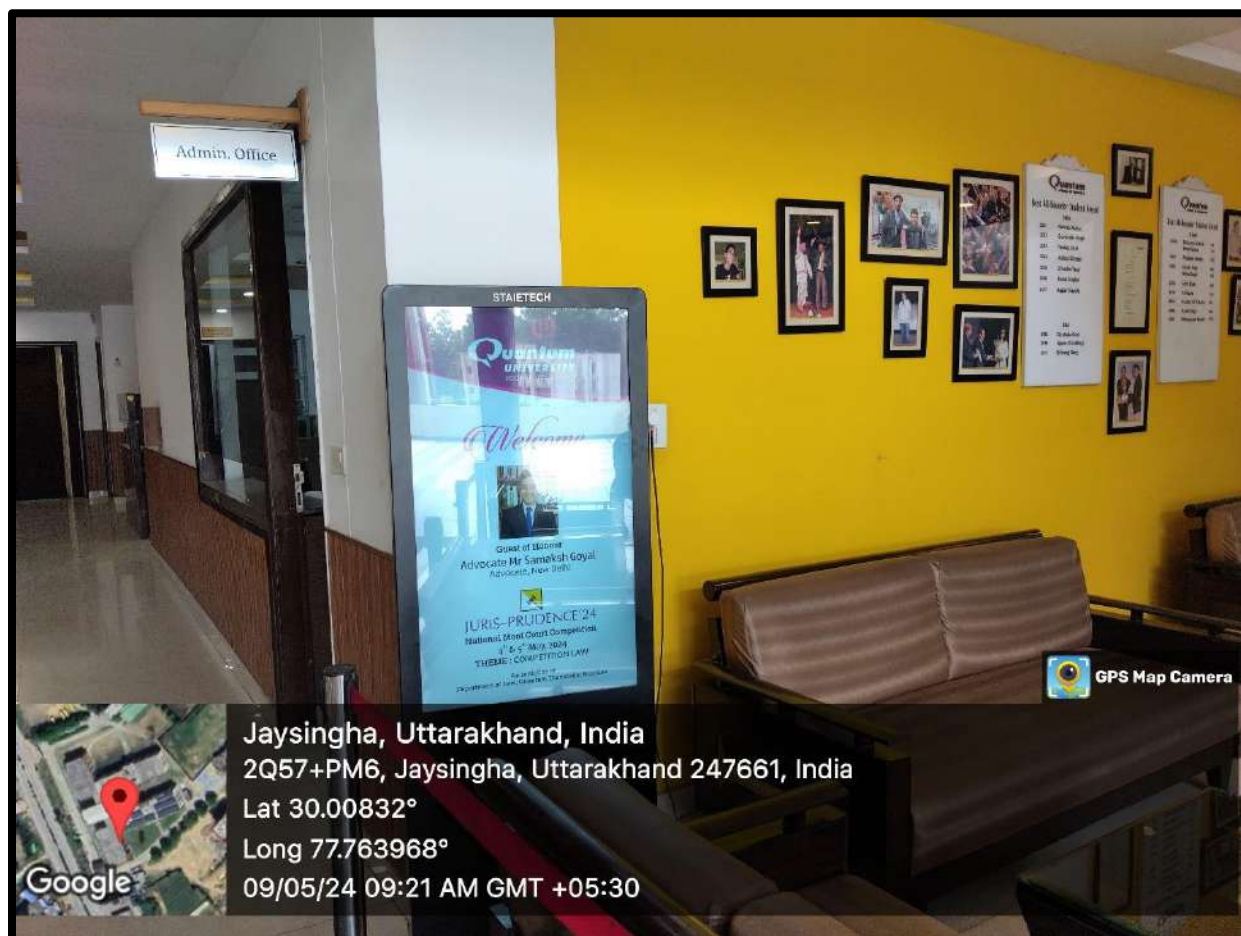
### Presenting Images of Tactiles Path

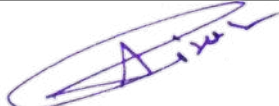


  
Registrar  
Quantum University



## Presenting images of display boards

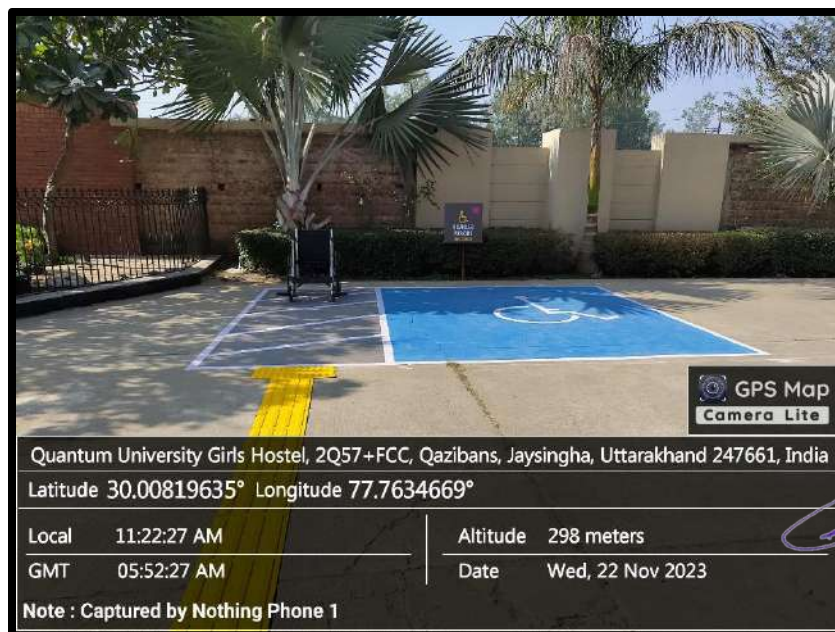


  
Registrar  
Quantum University

## PARKING FOR DISABLED

Quantum University in Roorkee underscores its commitment to inclusivity by providing designated parking spaces for individuals with disabilities. The university has implemented accessible parking solutions that comply with the standards set forth in the Persons with Disabilities Act 2016. These designated parking areas are strategically located to ensure proximity to key campus facilities, promoting ease of access for individuals with mobility challenges. The parking spaces are equipped with features such as extra width for wheelchair deployment and are situated close to ramps and accessible pathways. Clear and visible signage designates these spaces, ensuring that they are easily identifiable and respected by the university community. This thoughtful approach to disabled parking not only aligns with regulatory requirements but also fosters an environment where individuals with disabilities can navigate the campus with dignity and convenience. Quantum University's provision of accessible parking spaces reflects a broader commitment to creating a barrier-free and inclusive campus for all members of the university community.

Presenting images of parking for disable person

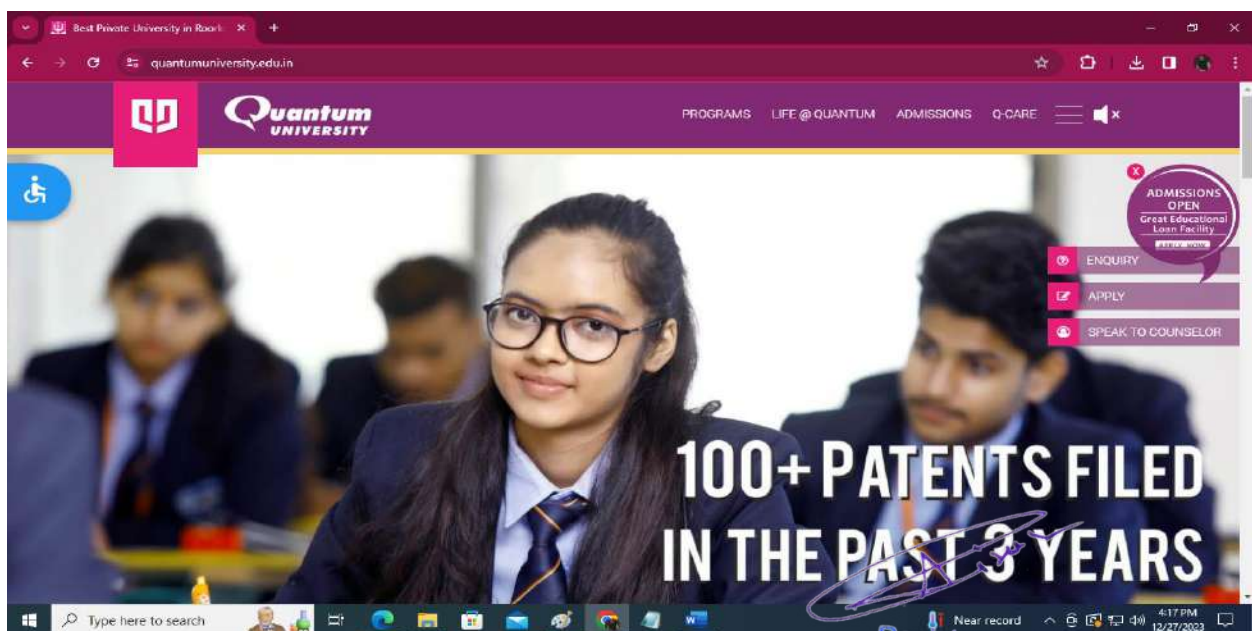


*[Signature]*  
Registrar  
Quantum University

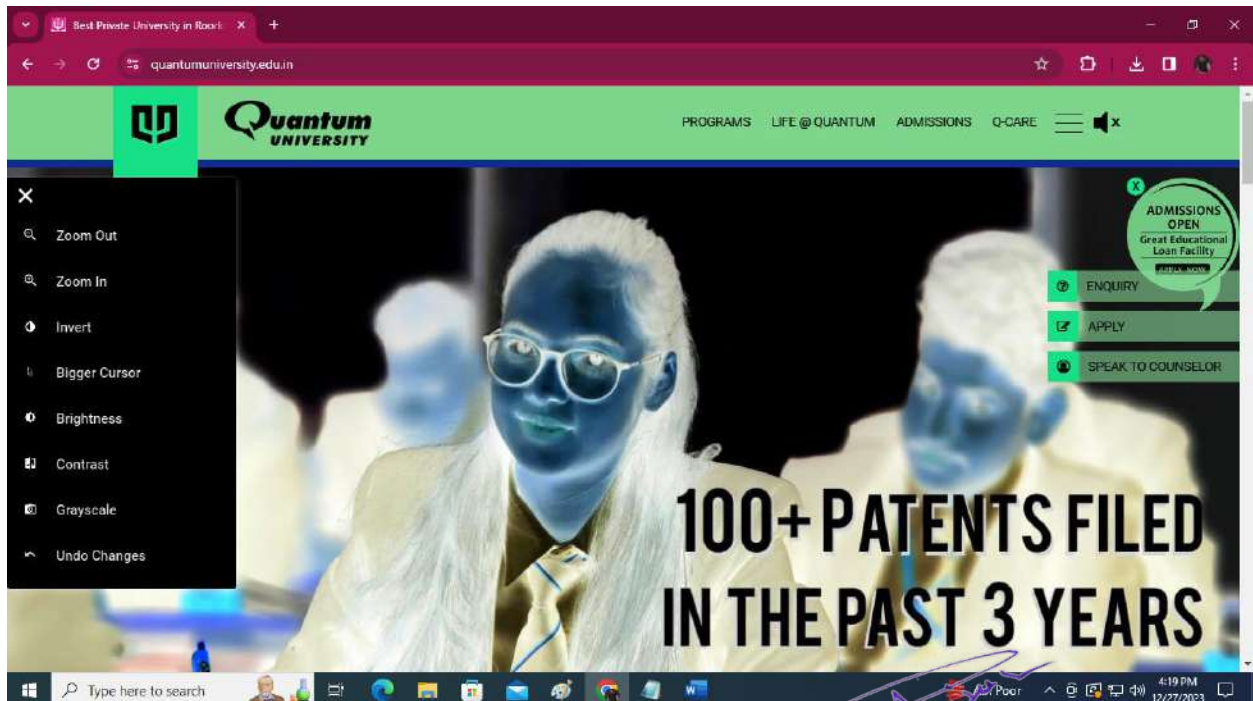
## ASSISTIVE TECHNOLOGY

Quantum University in Roorkee has further exemplified its dedication to inclusivity by developing a user-friendly website. The university's online platform is thoughtfully designed to ensure accessibility for individuals with diverse needs, including those with disabilities. The website incorporates features such as alt text for images, ensuring that screen readers can provide accurate descriptions for visually impaired users. The color scheme and font choices prioritize readability and cater to individuals with visual impairments or color blindness. Additionally, the website architecture is structured to facilitate easy navigation, with clear headings and labels enhancing the user experience for individuals relying on assistive technologies. Quantum University's commitment to a disable-friendly website aligns with universal design principles, aiming to provide equal access to information and resources for all users, regardless of their abilities. This proactive approach not only meets regulatory standards but also reflects the institution's broader commitment to fostering an inclusive and accessible educational environment both physically and digitally.

Presenting Screen Shots of disable friendly website

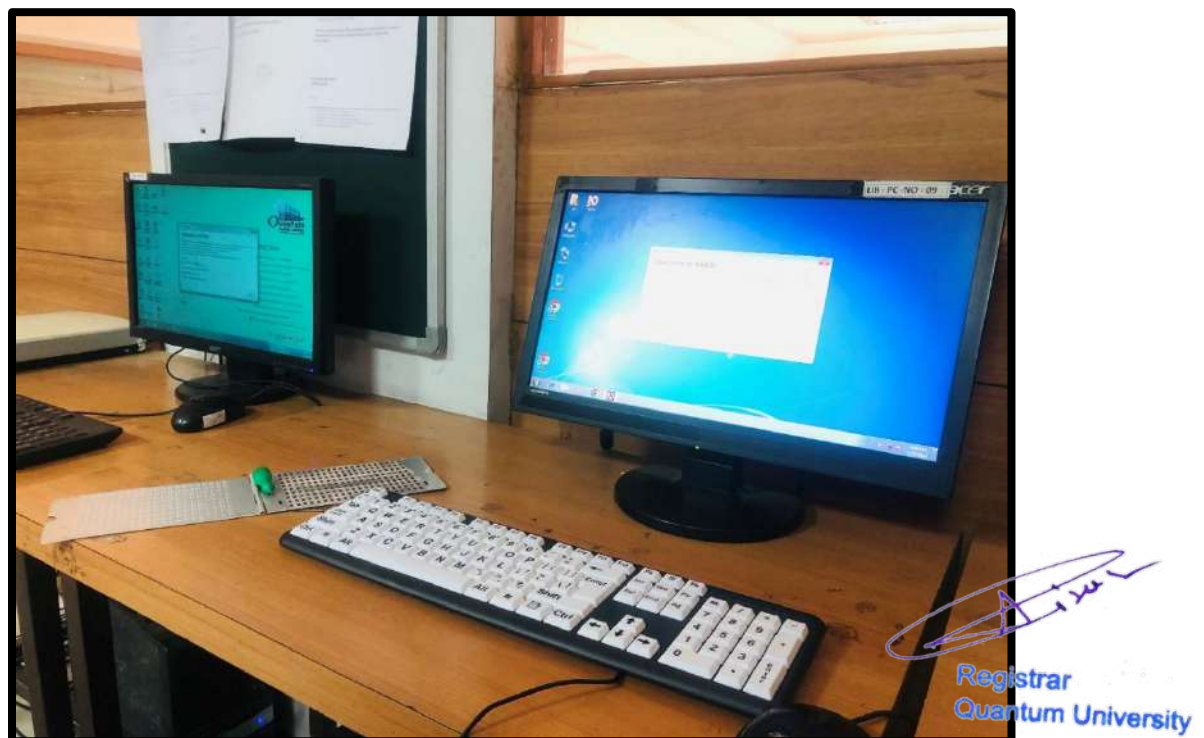




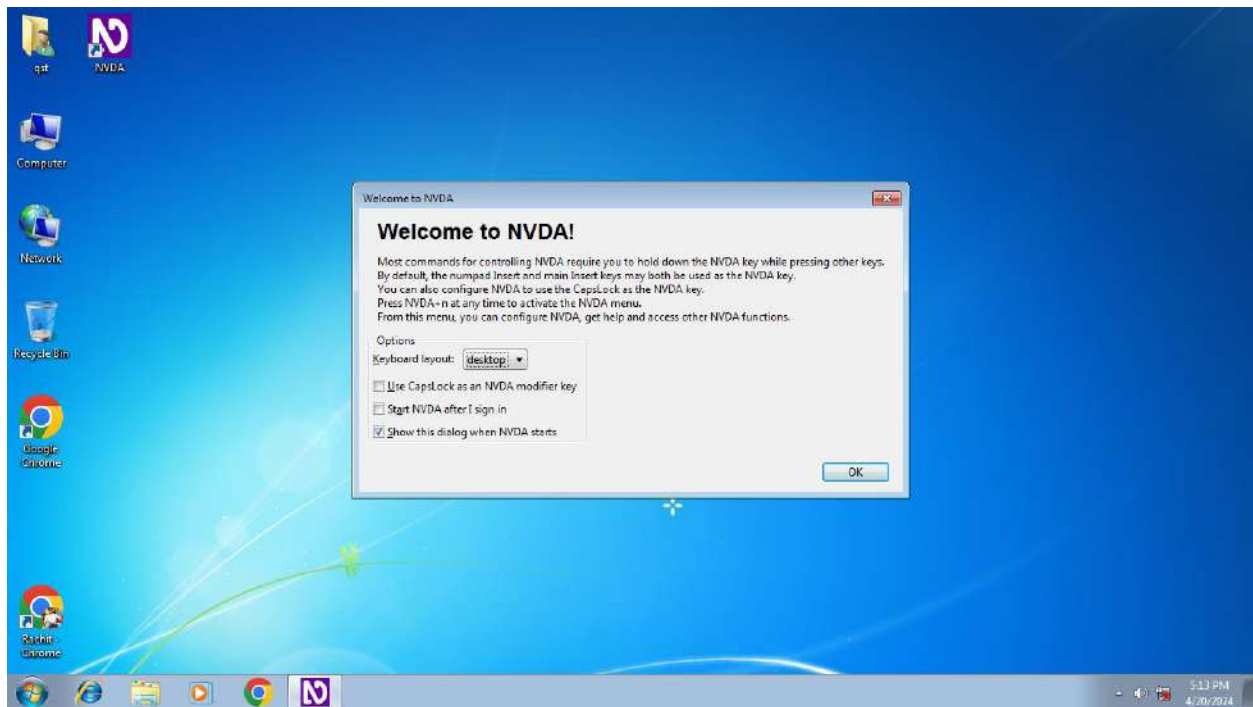


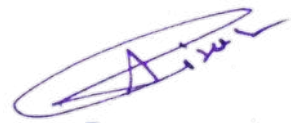
*[Signature]*  
Registrar  
Quantum University

**Presenting images of disable friendly keyboard installed software**



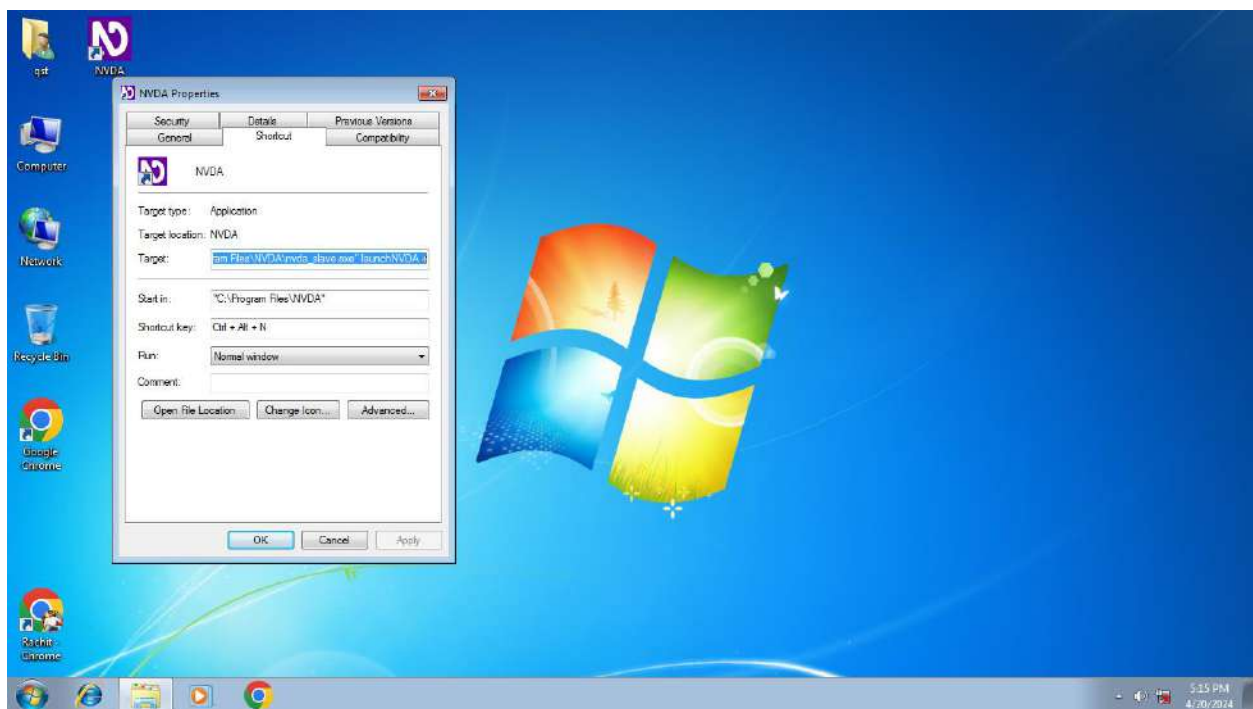
**"Introducing a snapshot showcasing software tailored to empower users with disabilities."**

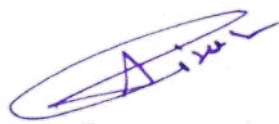


  
Registrar  
Quantum University



**"Introducing a snapshot showcasing software tailored to empower users with disabilities."**

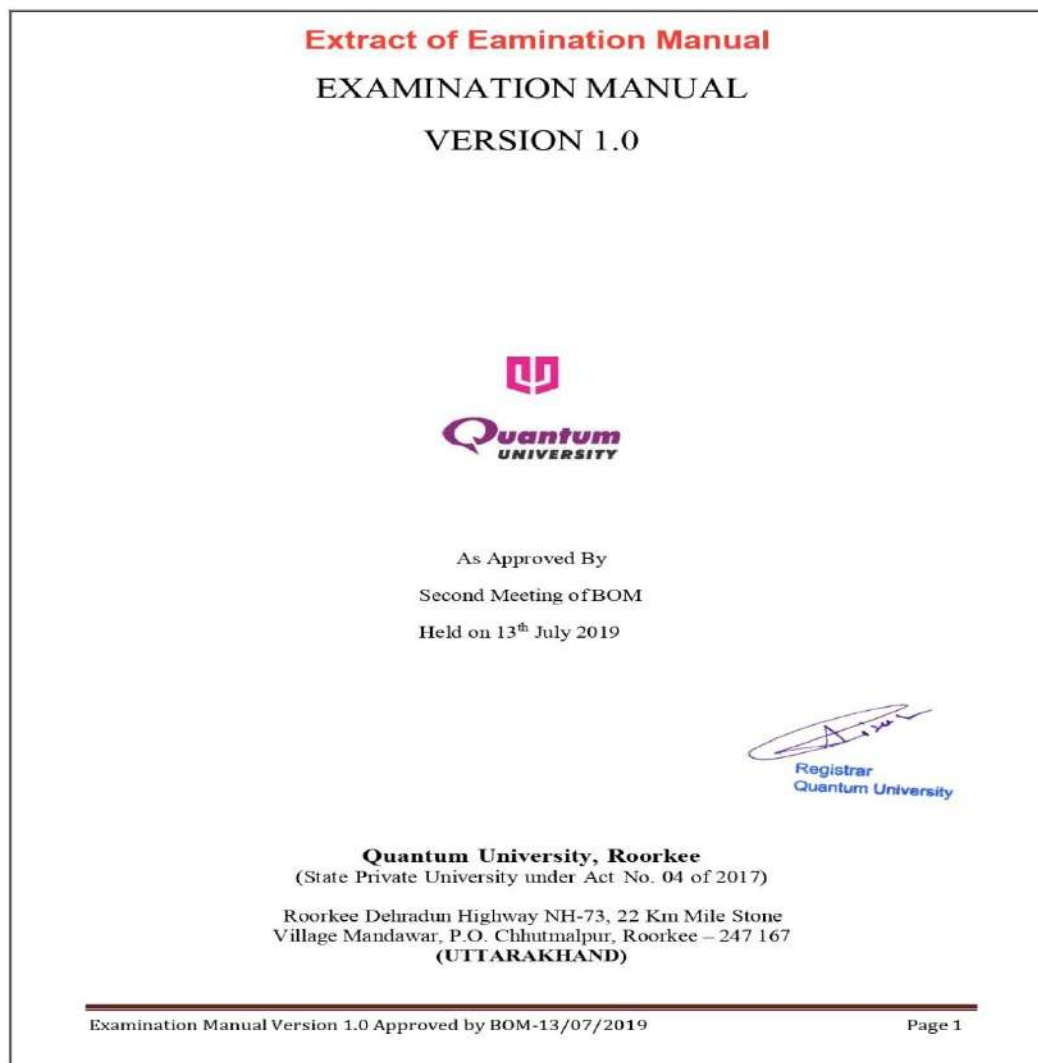


  
Registrar  
Quantum University

## Examination manual tailored to empower users with disabilities

"Explore Quantum University's innovative examination manual designed to ensure inclusivity and empowerment for users with disabilities. This manual is meticulously crafted to provide accessible and equitable examination opportunities, fostering an environment where every student can excel regardless of their abilities.

**Introducing a images showcasing examination manual tailored to empower users with disabilities"**





## TABLE OF CONTENTS

ITEM	Page No.
<b>1. Board of examination</b>	<b>3-5</b>
<b>2. Roles And Responsibilities</b>	<b>6-12</b>
<b>3. Internal Marks Policy</b>	<b>13-14</b>
<b>4. Instructions And Guidance For Students During Examinations</b>	<b>15-17</b>
<b>5. Policy Document for Conduct of Examination and Declaration of Result</b>	<b>17-22</b>
<b>6. Various Standard Operating Procedures (SOPs)</b>	
6.1 SOP for Conducting End Semester Examination	23-25
6.2 SOP for Uploading Continuous Internal Evaluation Marks On ERP	26-28
6.3 SOP for End Semester Lab Examinations	29-30
6.4 SOP Answer Book To Result	31-32
6.5 SOP for Evaluation Process	33-34
6.6 SOP for ESE Scrutiny/Seeing Answer Books	35-37
6.7 SOP for Re-Appearing In the Back-Paper Examination	37-38
6.8 SOP for ESE Result Analysis	39
6.9 SOP for Project Evaluation	40-42
6.10 SOP for ESE Training & Internship Evaluation	43
6.11 SOP for Setting Sessional Exam Question Papers	44-45
6.12 SOP for Printing of Mark sheets, Transcripts and Degrees	46-49
<b>7. Various Formats</b>	
7.1 Result Analysis Format	50-53
7.2 Application for Scrutiny/Seeing Answer Books	54-55
7.3 Question Paper Template – General	56
7.4 Question Paper Template – MBA	57
7.5 Question Paper Template – Engg Graphics	58
7.6 Question Paper Template – Engg Drawing	59
7.7 Exam Cell and Evaluation Center Forms	60-62
<b>8. Special Guidelines for Disabled students</b>	<b>63-65</b>



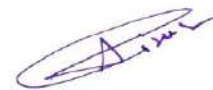
Registrar  
Quantum University

## Quantum University, Roorkee

### Special Guidelines for Students with disabilities for examination

Quantum University follows the revised guidelines issued by central government under guidelines for conducting written examination for persons with benchmark disabilities-2018; Dated 14 Jan 2019 for its students with disabilities. Following are the steps/guidelines followed;

- 1) Facility of scribe/reader/Lab assistant will be allowed to any person with benchmark disability as defined under section 2 of the RPwD Act 2016 and has limitation in writing including that of speed if so desired by him/her.  
In case of persons with benchmark disabilities in the category of blindness, locomotor - disability (both arm affected-BA) and cerebral palsy, the scribe/reader/Lab assistant shall be given, if so desired by the person and on the recommendation of university medical committee after verifying the case documents.  
In case of other category of persons with benchmark disabilities, the provision of scribe/reader/Lab assistant can be allowed on production of a certificate to the effect that the person concerned has physical limitation to write, and a scribe is essential to write examination on his behalf, from the Chief Medical Officer/Civil Surgeon/ Medical superintendent of a government health care institutions as per proforma at APPENDIX I.
- 2) Student can opt for bringing his own scribe/reader/lab assistant or request the C.O.E for the same. C.O.E on the basis of the request will identify the scribe/reader/lab assistant as per the requirement of the examination. In such instances, student will be allowed to meet the scribe two days before the examination so that the student gets a chance to check and verify the scribe suitability or not.
- 3) In both the cases, whether student brings his own scribe or university provides it, the qualification of the scribe should always be matriculate and above. And the qualification of the scribe should be one step below the qualification of the student taking examination and preferable not related to the stream of study or education background. The student opting for scribe/reader should submit details of the own scribe as per proforma at APPENDIX II along with supporting documents related to identity and qualification of the scribe.
- 4) Flexibility to change the scribe/reader/Lab assistant in case any emergency is given provided all the conditions are met as above.
- 5) Students with benchmark disabilities are given the option of choosing the mode for taking the examination i.e. in computer/recording the answers as per the request of the student.
- 6) In case the student with benchmark disabilities wishes to give exam in computer, then he will be given a computer system by CS and student is allowed to use his customized mouse/keyboard(if any). Student is allowed to check the system one day in advance so that system problems if any can be rectified.
- 7) Seating arrangement of students with benchmark disabilities will be customized based on suitability to the students on case to case basis by COE/CS preferably in ground floor.
- 8) Disability certificate issued by the competent medical authority at any place in the country is accepted.
- 9) Compensatory time of maximum 20 Minutes per hour of examination for student who are allowed to use scribe/reader/Lab assistant is permitted.
- 10) Such students are allowed assistive devices like talking calculator/Braille slate/abacus/geometry kit, augmentative communication devices.
- 11) On request by students with hearing impaired persons, alternative objective questions in lieu of descriptive question will be provided and for visual impaired students alternative questions will be provided in lieu of questions requiring visual inputs.



Registrar  
Quantum University

## APPENDIX I

### Certificate for student with specified disability having physical limitation to write

This is to certify that, we have examined Mr/Ms/Mrs ..... (name of the student), S/o/D/o.....a resident of ..... (Vil/PO/PS/District/State), aged .....yrs, a person with.....(nature of disability/condition),and to state that he/she has limitation which hampers his/her writing capability owing to his/her above condition. He/she requires support of scribe for writing the examination.

2. The above candidate uses aids and assistive device such as prosthetics & orthotics, hearing aid .....(name to be specified) which is /are essential for the candidate to appear at the examination with the assistance of scribe.

3. This certificate is issued only for the purpose of appearing in written examinations conducted by recruitment agencies as well as academic institutions and is valid upto ..... (it is valid for maximum period of six months or less as may be certified by the medical authority)

Signature of medical authority

Name of Chief Medical Officer/Civil Surgeon/Chief District Medical Officer

Name of Government Hospital/Health Care Centre with Seal

Place

Date

#### Note:

Certificate should be given by a specialist of the relevant stream/disability(eg. Visual impairment-Ophthalmologist, Locomotor disability-Orthopaedic specialist/PMR)



Registrar  
Quantum University

**APPENDIX II**

**Letter of Undertaking by the student using own scribe**

1. I ..... a student with .....  
..... (nature of ... disability/condition) appearing for the.....  
..... (name of the examination) bearing roll number  
..... of programme and branch(if any)of study..... Year of  
study.....
2. I do hereby state that ..... (Name of the scribe/reader/lab assistant) will provide the  
service of scribe/reader/lab assistant for the undersigned for taking the aforementioned examination.
3. I do hereby undertake that his qualification is ..... Supporting documents submitted related to identity  
and qualifications are correct to my belief. In case, subsequently it is found that his qualification or identity is not as  
declared by the undersigned and is beyond my qualification. I shall forfeit my right to the certificate/diploma/degree  
and claims relating thereto.

(Name and Signature of the Student)

(Counter signature by the parent/guardian, if the candidate is minor)

Place:

Date:



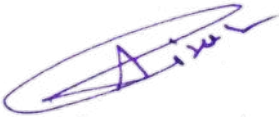
Registrar  
Quantum University



The university's commitment is evident in designated parking spaces for individuals with disabilities, strategically placed for easy access. Clear signage and compliance with regulatory standards reflect a broader dedication to creating a barrier-free and inclusive environment. Quantum University extends its inclusivity efforts to the digital realm with a user-friendly website, incorporating features like alt text, readable color schemes, and structured navigation to ensure accessibility for individuals with diverse needs. Overall, Quantum University's initiatives showcase a holistic commitment to fostering an inclusive educational landscape, both physically and digitally.

***“Fostering An Inclusive And Accessible Educational Environment  
Both Physically And Digitally”***

X-X-X



Registrar  
Quantum University